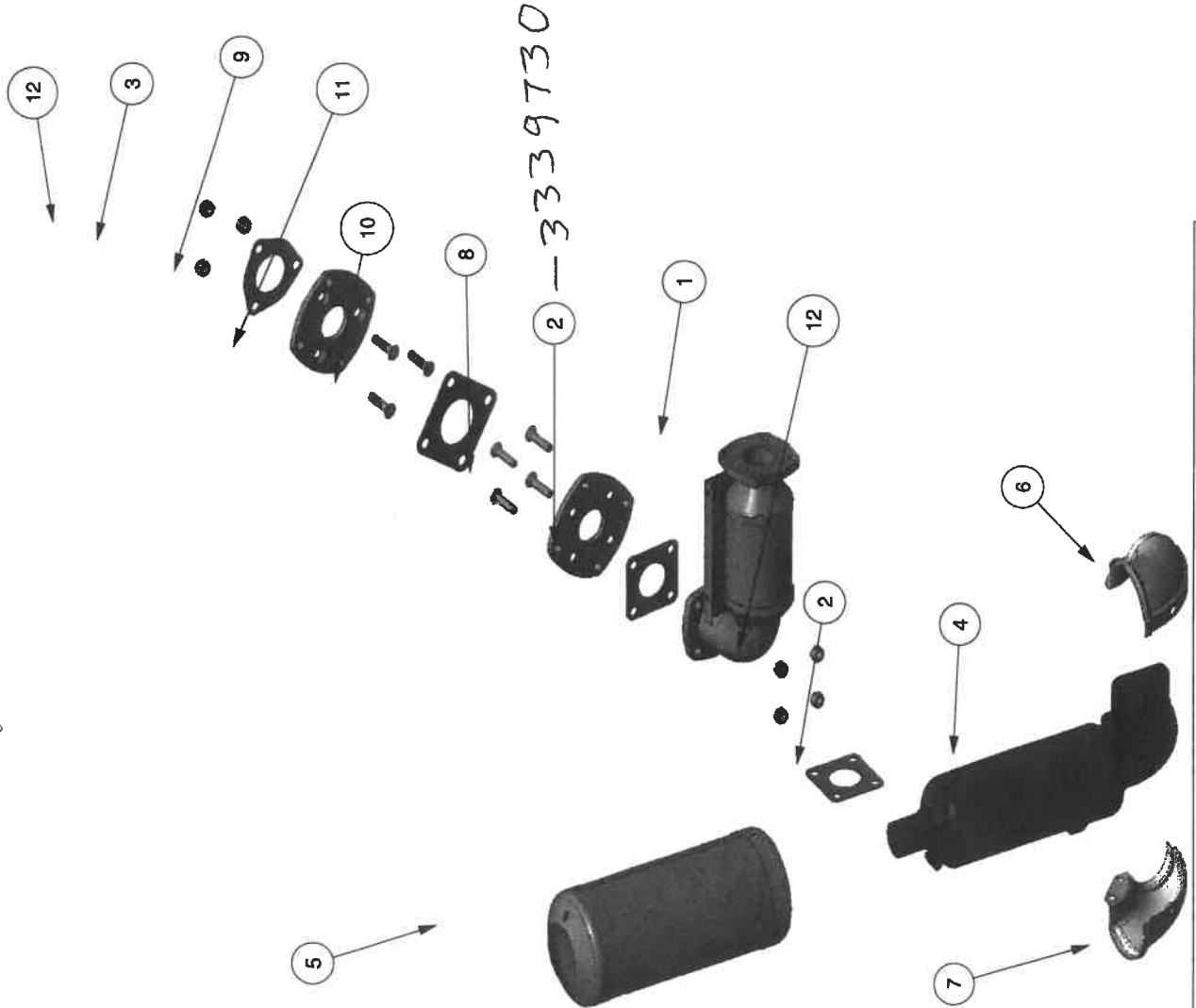


YOU MUST CONTACT KUBOTA VIA KUBOTA DISTRIBUTOR (ENGINE POWER, INC.) BEFORE ANY PARTS RELATED TO YOUR DELEGATED ASSEMBLY CONTRACT LISTED IN THIS DOCUMENT ARE TO BE CHANGED IF THE ENGINE IS EXPORTED TO U.S. AND CANADA. THE CHANGES MAY ONLY BE MADE UPON MUTUAL AGREEMENT. FAILURE TO DO THIS MAY BE SUBJECT TO THE VIOLATION OF THE PARAGRAPH (K) OF 40 CFR PART 1068.261.

6



SEQ. NO.	ITEM NUMBER	BOM USAGE	QTY	DESCRIPTION	UOM
1	C21		1	MUFFLER KIT IN-LINE CAT	EA
2	15263-12370		2	GASKET, MUFFLER NA	EA
3	15862-12230		1	GASKET, MUFFLER, 3-BOLT	EA
4	12582-12110	SLTC	1	MUFFLER	EA
5	12691-64510	SLTC	1	MUFFLER COVER	EA
6	66711-54550	SLTC	1	COVER LH	EA
7	66711-54560	SLTC	1	COVER RH	EA
8	3338244		1	ADAPTER, MUFFLER	EA
9	3338245		1	ADAPTER, MANIFOLD	EA
10	19258-12230		1	GASKET, MUFFLER NA	EA
11	1139975		7	M8-1.25X35 TAPERED HEAD SCREW	EA
12	1190681		7	M8-1.25 LOCK NUT	EA

2-3339730
 3-3330021
 4-3316505
 5-3331312
 10-3338233

NOTICE:

THIS GROUP HAS BEEN VALIDATED TO COMPLY WITH FEDERAL EMISSIONS REQUIREMENTS. MODIFICATION OF COMPONENTS OR INSTALLATION REQUIRES RE-EVALUATION BY ENGINE POWER, INC. PRIOR TO USE IN PRODUCTION. PAY PARTICULAR ATTENTION TO THE FOLLOWING:

EXHAUST SYSTEM:

KUBOTA SUPPLIES A CERTIFIED CATALYST. NO OTHER CATALYST MAY BE USED. FEASIBILITY OF INSTALLING THE FUEL SYSTEM COMPONENTS PER EMISSIONS CONTRACT DOCUMENTATION CONFIRMED DURING APPLICATION REVIEW TESTING.



1830 Executive Dr.
 Oconomowoc, WI. 53066-4831

THIS DOCUMENT CONTAINS INFORMATION PROPRIETARY TO ENGINE POWER, INC. AND MAY NOT BE REPRODUCED OR DISSEMINATED IN ANY FORM, IN WHOLE OR PART, WITHOUT WRITTEN CONSENT. USE OF THIS INFORMATION FOR PURPOSES OTHER THAN THAT ORIGINALLY INTENDED, OR UNINTENTIONAL DISCLOSURE TO A 3RD PARTY IS EXPRESSLY PROHIBITED.

ITEM NO: 300-SM-4

DESCRIPTION: GRP-EXH,WG752,C21,MFLR,ADPT/3B

TOLS: XXX = +/- 0.1°
 XX = +/- 0.50°
 X = +/- 0.60°
 ANG = +/- 1 DEGREE

ENGINEERING CHANGES:			
REV: A	DESCRIPTION OF CHANGE: TRANSFERRED TO WINDCHILL	DATE: 08-Dec-21	CN: Dustin Haessig
DRAWN BY:		Dustin Haessig	